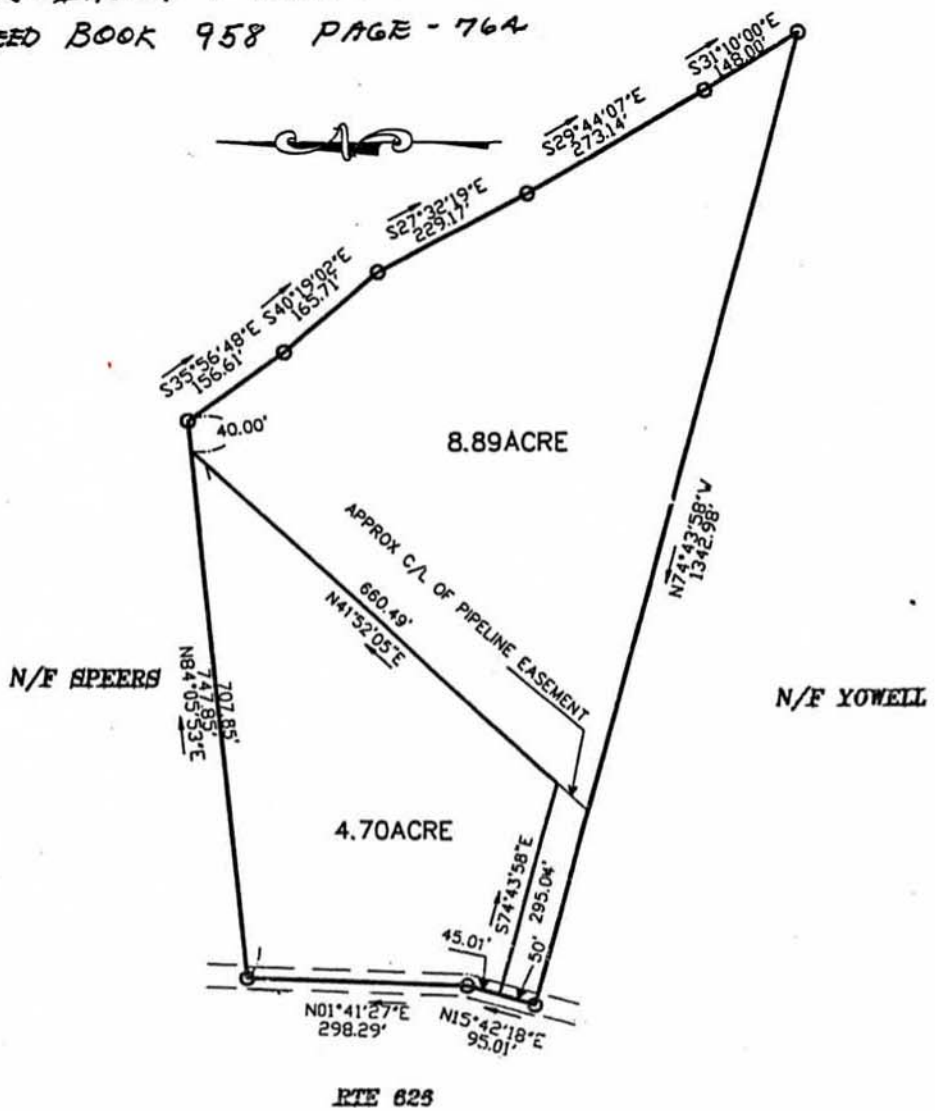


J. IRVIN & SYLVANIA MCCLURKIN
DEED BOOK 958 PAGE - 764

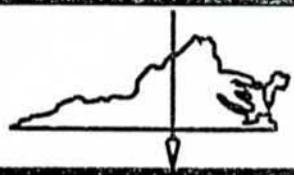


THIS PLAT BASED ON PLAT
BY T.L BAYS AND DOES
NOT REPRESENT AN
ACTUAL FIELD SURVEY

PLAT OF TWO PARCELS OF LAND FRONTING ON ROUTE 626

ASHLAND DISTRICT, HANOVER COUNTY, VIRGINIA

SCALE 1" = 200' 8 OCT 96 BOOK 1215 PAGE 530



WINGATE & KESTNER P.L.C.
5803 STAPLES MILL ROAD
RICHMOND, VIRGINIA 23228
(804)288-3155 * FAX(804)266-5016