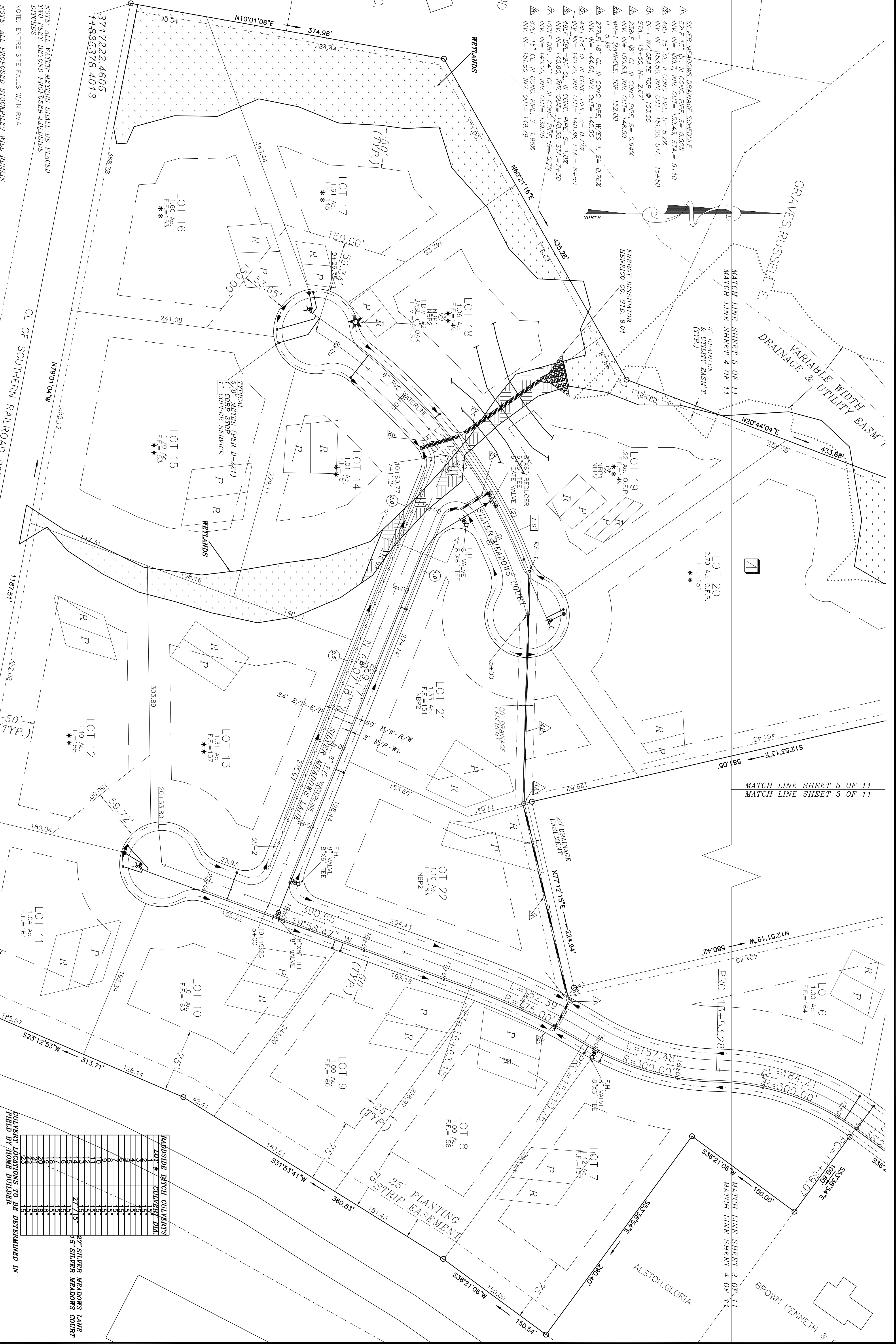


- SILVER MEADOWS DRAINAGE SCHEDULE**
- △ 52LF 15" CL. III CONC. PIPE, S= 0.52%
  - INV. IN= 159.7, INV. OUT= 159.43, STA= 5+10
  - △ 48LF 15" CL. II CONC. PIPE, S= 5.2%
  - INV. IN= 153.9, INV. OUT= 151.0, STA= 15+50
  - △ D-I W/1/8" GATE TOP @ 153.50
  - △ STA= 15+50, H= 2.87
  - △ 238LF 18" CL. III CONC. PIPE, S= 0.94%
  - INV. IN= 150.83, INV. OUT= 148.59
  - △ MH-1 MANHOLE, TOP= 152.00
  - △ H= 5.89
  - △ 272LF 18" CL. III CONC. PIPE, W/SS-1, S= 0.76%
  - INV. IN= 144.61, INV. OUT= 142.50
  - △ 48LF 18" CL. II CONC. PIPE, S= 0.72%
  - INV. IN= 140.2, INV. OUT= 140.35, STA= 6+50
  - △ 48LF DBL. 24" CL. III CONC. PIPE, S= 1.0%
  - INV. IN= 140.8, INV. OUT= 140.50, STA= 7+30
  - △ 107LF DBL. 24" CL. III CONC. PIPE, S= 0.2%
  - INV. IN= 140.0, INV. OUT= 139.25
  - △ 87LF 15" CL. III CONC. PIPE, S= 1.96%
  - INV. IN= 151.50, INV. OUT= 149.79



NOTE: ALL WATER METERS SHALL BE PLACED TWO FEET BEYOND PROPOSED ROADSIDE DITCHES

NOTE: ENTIRE SITE FALLS W/IN RNA

NOTE: ALL PROPOSED STOCKPILES WILL REMAIN IN PLACE NO LONGER THAN ONE (1) YEAR FROM THE PLAN APPROVAL DATE. ANY EXTENSIONS OF THIS TIME PERIOD MUST BE GRANTED BY THE DEPARTMENT OF PUBLIC WORKS.

THREE PROTECTION WILL BE PROVIDED FOR ALL AREAS WITH EXCEPTION TO THE FOLLOWING ACTIVITIES:

- ROAD CONSTRUCTION
- DRAINAGE IMPROVEMENTS
- UTILITY CONSTRUCTION
- HOUSE CONSTRUCTION
- EROSION CONTROL
- AND ANY OTHER ACTIVITIES AUTHORIZED UNDER FINAL CONSTRUCTION PLANS

REFERENCE:

COUNTY SEWER BOOK: 354 NW & 354 SW

COUNTY WATER BOOK: 354 NW & 354 SW

LOT #	CULVERT DIA.	RAILROADSIDE DITCH CULVERTS
1	36"	
2	36"	
3	36"	
4	36"	
5	36"	
6	36"	
7	36"	
8	36"	
9	36"	
10	36"	
11	36"	
12	36"	
13	36"	
14	36"	
15	36"	
16	36"	
17	36"	
18	36"	
19	36"	
20	36"	
21	36"	
22	36"	

CULVERT LOCATIONS TO BE DETERMINED IN FIELD BY HOME BUILDER.

27" SILVER MEADOWS LANE

15 SILVER MEADOWS COURT

SCALE: 1"=50'

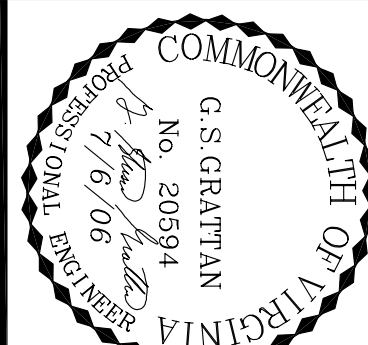
JOB NAME: **SILVER MEADOWS SUBDIVISION**

DISTRICT, COUNTY AND STATE: **VARINA DISTRICT HENRICO COUNTY, VIRGINIA**

SHEET TITLE: **SUBDIVISION & UTILITY SHEET**

**GRATTAN ASSOCIATES CONSULTING ENGINEER**

P.O. BOX 17576 RICHMOND, VA 23226 (804) 346-4091



DATE	REVISIONS
7/6/06	REVISED PER COUNTY COMMENTS