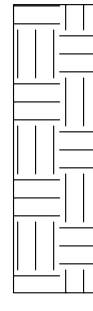


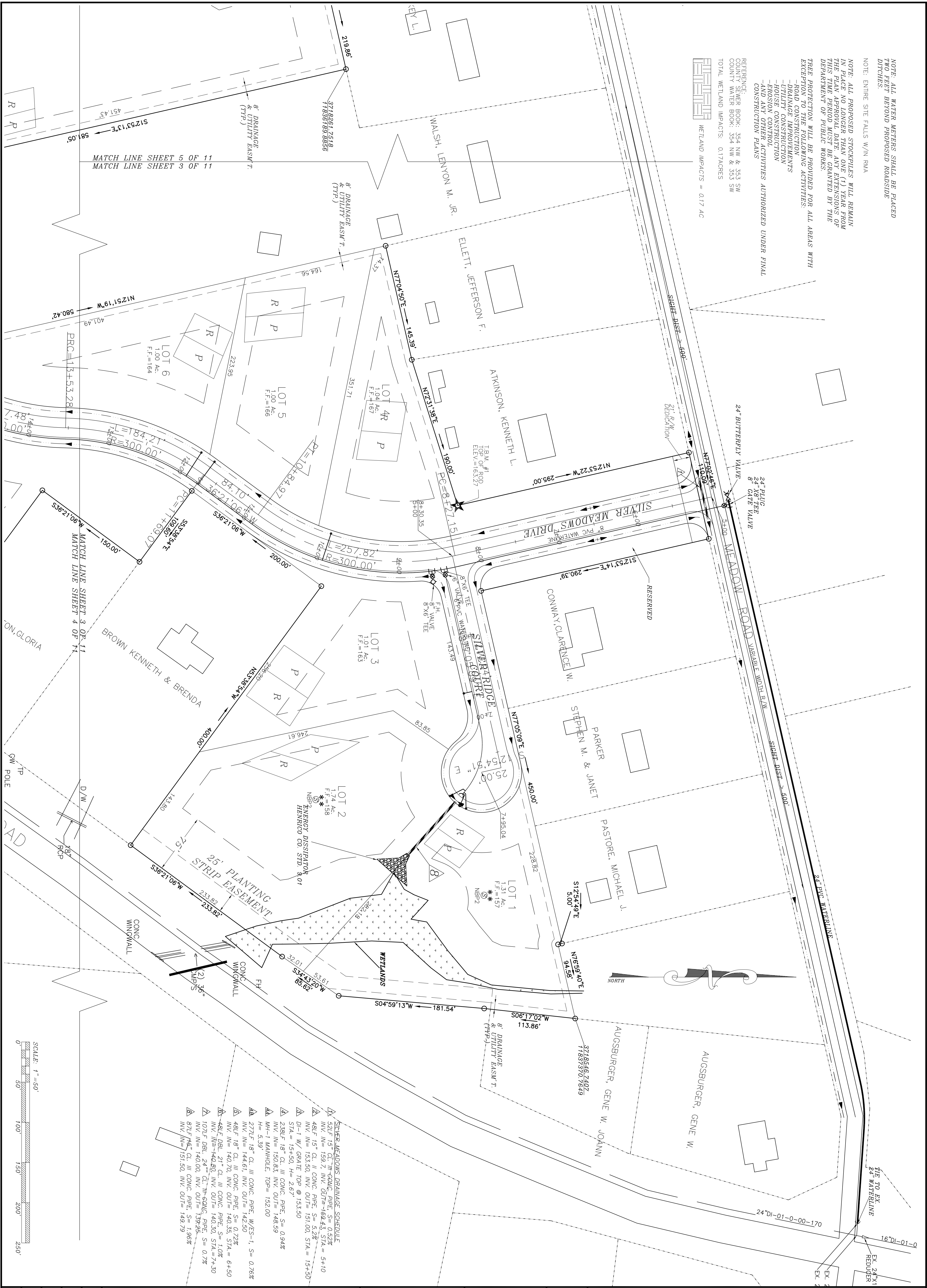
NOTE: ALL WATER METERS SHALL BE PLACED TWO FEET BEYOND PROPOSED ROADSIDE DITCHES.
 NOTE: ENTIRE SITE FALLS W/IN RMA

NOTE: ALL PROPOSED STOCKPILES WILL REMAIN IN PLACE NO LONGER THAN ONE (1) YEAR FROM THE PLAN APPROVAL DATE. ANY EXTENSIONS OF THIS TIME PERIOD MUST BE GRANTED BY THE DEPARTMENT OF PUBLIC WORKS.
 TREE PROTECTION WILL BE PROVIDED FOR ALL AREAS WITH EXPOSED TO OTHER FOLLOWING ACTIVITIES:
 -ROAD CONSTRUCTION
 -DRAINAGE IMPROVEMENTS
 -UTILITY CONSTRUCTION
 -HOUSE CONSTRUCTION
 -EROSION CONTROL
 -AND ANY OTHER ACTIVITIES AUTHORIZED UNDER FINAL CONSTRUCTION PLANS

REFERENCE:
 COUNTY SEWER BOOK: 354 NW & 353 SW
 COUNTY WATER BOOK: 354 NW & 353 SW
 TOTAL WETLAND IMPACTS: 0.17ACRES

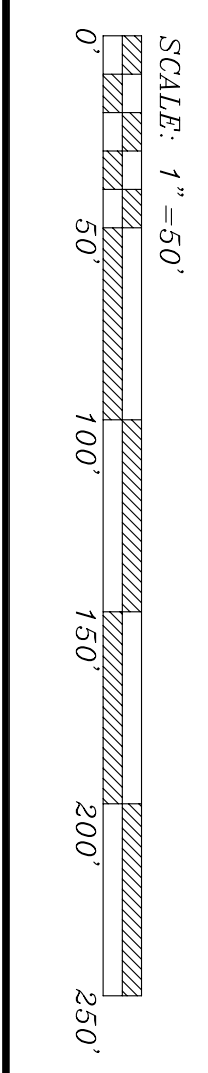


WETLAND IMPACTS = 0.17 AC



MATCH LINE SHEET 5 OF 11
 MATCH LINE SHEET 3 OF 11

MATCH LINE SHEET 3 OF 11
 MATCH LINE SHEET 4 OF 11



- SILVER MEADOWS DRAINAGE SCHEDULE**
- △ 32LF 15" CL. III CONC. PIPE, S= 0.52%
 - INV. IN= 159.7, INV. OUT= -169.43, STA= 5+10
 - △ 48LF 15" CL. II CONC. PIPE, S= 5.2%
 - INV. IN= 153.50, INV. OUT= 151.00, STA= 15+50
 - △ D-1 W/ ORATE TOP @ 153.50
 - STA= 15+50, H= 2.67'
 - △ 238LF 18" CL. III CONC. PIPE, S= 0.94%
 - INV. IN= 150.83, INV. OUT= 148.59
 - △ MH-1 MANHOLE, TOP= 152.00
 - H= 5.39'
 - △ 277LF 18" CL. III CONC. PIPE, W/S= 1, S= 0.76%
 - INV. IN= 144.61, INV. OUT= 142.50
 - △ 48LF 18" CL. III CONC. PIPE, S= 0.72%
 - INV. IN= 140.70, INV. OUT= 140.33, STA= 6+50
 - △ 48LF DBL. 21" CL. III CONC. PIPE, S= 1.0%
 - INV. IN= -140.80, INV. OUT= 140.30, STA= 7+30
 - △ 107LF DBL. 24" CL. III CONC. PIPE, S= 0.7%
 - INV. IN= 140.00, INV. OUT= 138.25
 - △ 87LF 18" CL. III CONC. PIPE, S= 1.96%
 - INV. IN= 151.50, INV. OUT= 149.79

SCALE: 1" = 50' DESIGNED BY: GSC DATE: 3/24/06 SHEET NUMBER: 3 OF 11 JOB NUMBER: 05-0715	JOB NAME: SILVER MEADOWS SUBDIVISION DISTRICT, COUNTY AND STATE: VARINA DISTRICT HENRICO COUNTY, VIRGINIA SHEET TITLE: SUBDIVISION & UTILITY SHEET	GRATTANS ASSOCIATES CONSULTING ENGINEER P.O. BOX 17576 RICHMOND, VA 23226 (804) 346-4091	COMMONWEALTH OF VIRGINIA G.S. GRATTAN No. 20594 1/16/06 PROFESSIONAL ENGINEER	DATE: 7/6/06 REVISIONS: REVISED PER COUNTY COMMENTS
--	--	---	---	---