

ILLEN

ARTHUR E. & SHIRLEY M. CHISHUM

PARCEL A = 52.5 ± ACRES

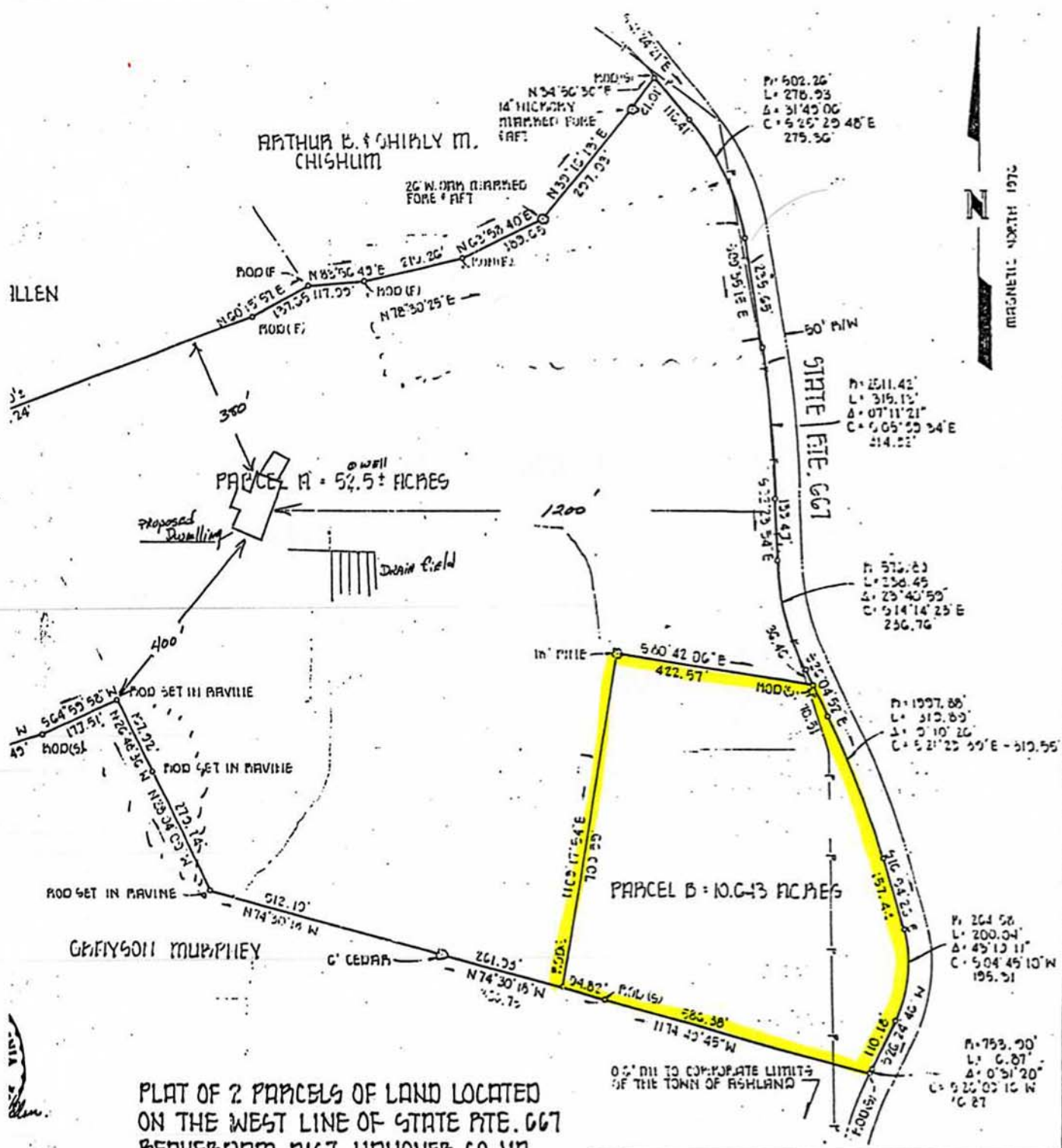
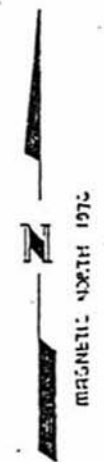
PARCEL B = 10.643 ACRES

GRAIGSON MURPHY

PLAT OF 2 PARCELS OF LAND LOCATED ON THE WEST LINE OF STATE PTE. 667 BEAVERDAM DIST., HANOVER CO., VA.

scale 1" = 200'

ASSOCIATED ENGINEERS & SURVEYORS LTD. POST OFFICE BOX 5189 ASHLAND, VIRGINIA



14" HIGH WOODY PLUMMED FORE & AFT

20" W. OAK PLUMMED FORE & AFT

P= 502.26'  
L= 276.93  
Δ= 31°45'06"  
C= 525°29'48"E  
275.36'

P= 2511.42'  
L= 315.13'  
Δ= 07°11'21"  
C= 505°53'34"E  
214.22'

P= 573.83  
L= 238.45  
Δ= 29°40'59"  
C= 514°14'23"E  
236.76'

P= 1097.88'  
L= 312.89'  
Δ= 0°10'26"  
C= 52°22'39"E - 512.55'

P= 264.58  
L= 200.04'  
Δ= 45°13'11"  
C= 504°45'10"W  
195.31'

P= 753.90'  
L= 6.87'  
Δ= 0°51'20"  
C= 525°02'16"W  
'C 27'

0.5' DIT TO CORRESPONDING LIMITS OF THE TOWN OF ASHLAND

PROPOSED DWELLING

DRAIN FIELD

STATE PTE. 667

in' PILE

in' PILE

C CEDAR

SEE VIEW